

a

A PROFESSIONAL PUMP MANUFACTURER

Eifel Pump (Fuzhou) Corporation Ltd. is a professional pump manufacturer in Fuzhou City, Fujian Province in China mainland. It was founded in the Year of 2004, specialized in centrifugal pump design, manufacture and marketing. Now Eifel Pump has a 32000m² modernized plant with three modern workshops and the largest pump testing bay in Minhou Tieling Economic & Technology Industrial Zone.



ENDEAVORING IN CENTRIFUGAL PUMP SUPPLY CONFORMING TO INTERNATIONAL STANDARDS

Eifel provides various centrifugal pumps conforming to international standards to our customers all over the world, such as DIN24255/EN 733 standard end suction centrifugal pumps, DIN24255/EN 733 standard close-coupled end suction centrifugal pumps, ISO 2858 standard high-efficiency end suction centrifugal pumps and vertical in-line pumps, self-priming sewage pumps, double-suction split casing pumps.....etc. These pump products are good-looking, quality-reliable, energy-saving, strong and stable in performance, widely applied in the fields of plants, mine, city water supply, firefighting, construction, irrigation and sewage treatment. As a reliable manufacturer, Eifel Pump has accumulated rich experiences in collaboration with our clients in PSB and UL certification among the past decade. Eifel has always focusing on enhancing our research and development capabilities, and for particular technical projects, we invites the domestic and foreign pump experts to give their guides and trainings to our engineers, as well as improve machining and quality control process in our factory.

COMPANY HONOR AND TECHNOLOGY ACHIEVEMENT

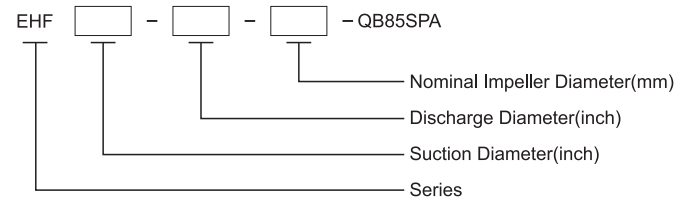
Early in 2007, Eifel passed ISO9001:2008 international quality management system certification. In the Year of 2012, our Eifel Brand obtained the honor of Famous Brand of Fujian Province, and our ES series of double-suction split casing pumps passed Science and Technology Achievement Appraisal from China Machinery Industry Federation (CMIF) in the Year of 2014.



Description & Features

EHF pumps are designed in accordance with all requirements of UL standard for safety (UL448). EHF pumps are optimized hydraulic pump design, brought high efficiency and the performance of energy conservation.

Model Instruction



For instance, suction diameter 2.5inch, discharge diameter 1.5inch, nominal Impeller Diameter 250mm, its name EHF2515250.



Material Code

- Q: Ductile Iron Casing
- B85: Bronze Impeller
- S: ASTM 420 Shaft
- P: Gland Packing
- A: ANSI Flange

Product standard

Pump installing dimension is conforming to ISO 2858 standard. Performance is meeting with UL448-2013 regulation.



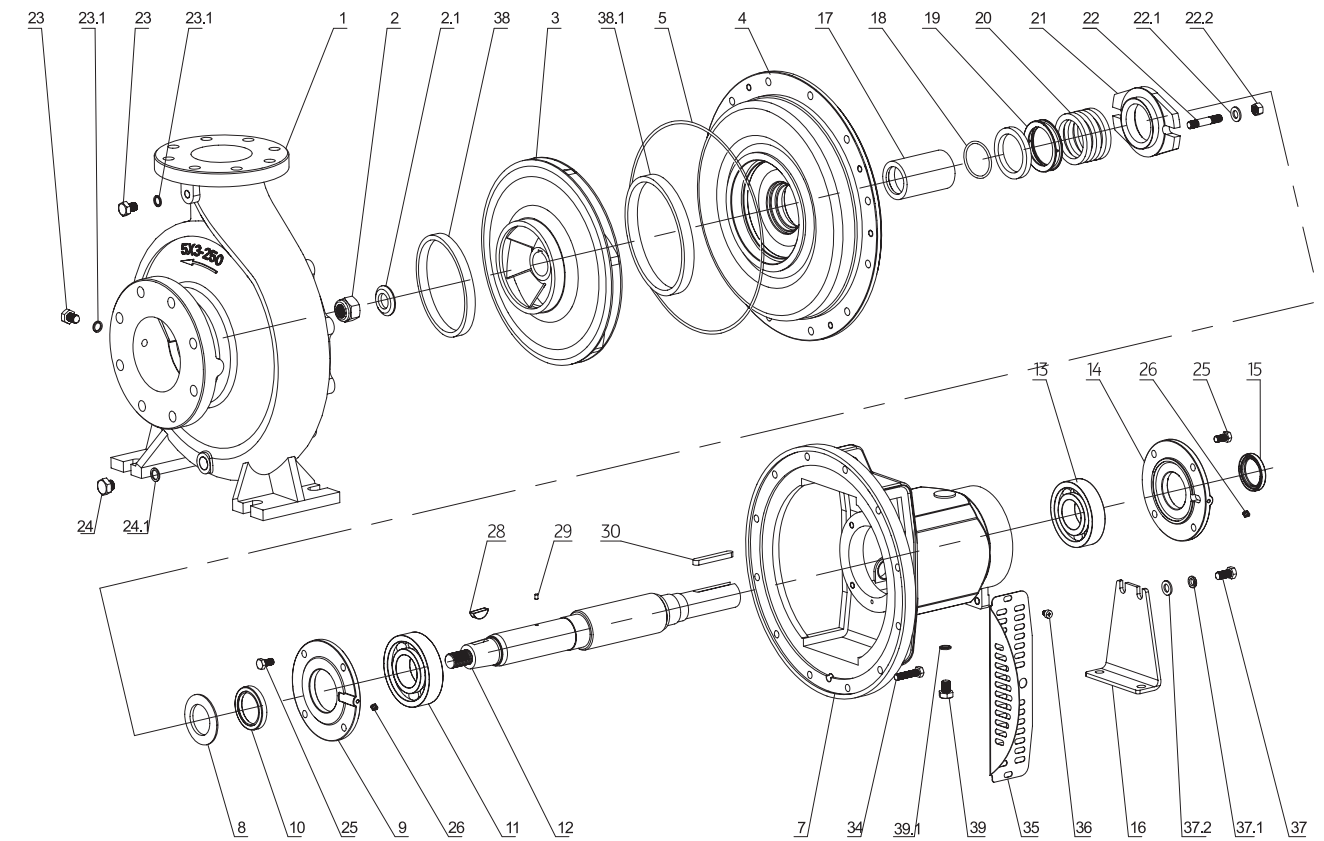
Flange standard

ASME B16.42-1998 CLASS150(EHF2515250、EHF32250、EHF425250、EHF53250)
ASME B16.42-1998 CLASS300(EHF53315、EHF54315)

Operating Data

Suction Diameter	2.5 ~ 5 inch
Discharge Diameter	1.5 ~ 4 inch
Flowrate(Q)	50 ~ 750 usgpm
Head(H)	84 ~ 230 psi
Speed	2900 rpm
Working Pressure	200 ~ 290 psi

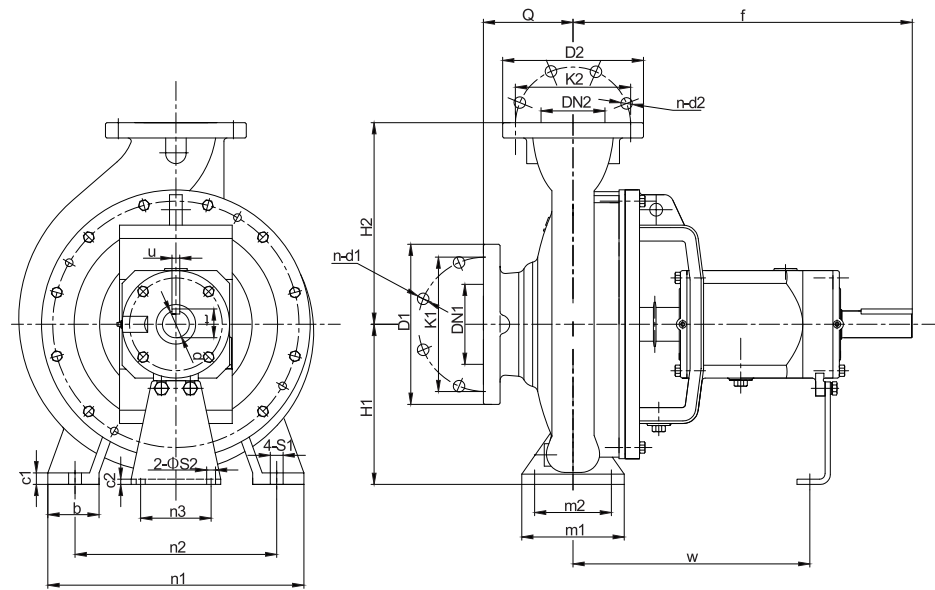
EHF Series Explode View & List of Parts



Code	Part Name	Code	Part Name	Code	Part Name
1	Casing	16	Support Foot	26	Oil Cup M6
2	Impeller Nut	17	Packing Sleeve	28	key
2.1	Lock washer for impeller	18	O-ring	29	pin
3	Impeller	19	Gland Packing	30	key
4	Gland Cover	20	Packing Seal Cage	34	Screw Bolt
5	O-ring	21	Gland Cover	35	Protective cover
7	Bearing Housing	22	Stud Bolt	36	Bolt
8	Rubber Slinger	22.1	Flat Washer	37	Screw Bolt
9	NDE Bearing Cover	22.2	Screw Nut	37.1	Elastic Washer
10	NDE Oil Seal	23	Plug	37.2	Flat Washer
11	NDE Bearing	23.1	Plug Spacer	38	Front-Wearing
12	Shaft	24	Plug	38.1	Back-Wearing
13	DE Bearing	24.1	Plug Spacer	39	Plug
14	DE Bearing Cover	25	Screw Bolt	39.1	Plug Spacer
15	DE Oil Seal				

NOTE: EHF53315 & EHF54315 Lacking of parts No. 14, 15 & 26.

EHF Series Installation Dimensions



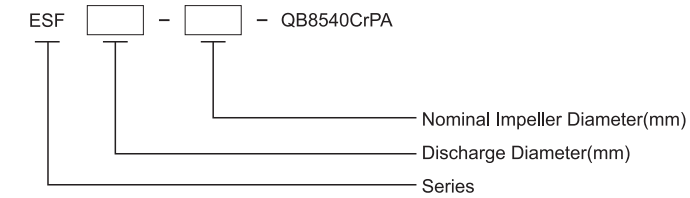
Model	DN1		DN2		Impeller Dia.	Shaft No.	a	f	h1	h2	b	m1	m2	n1	n2	n3	c1	c2	w	S1	S2	d	t	u	l	Weight (kg)
	inch	mm	inch	mm																						
EHF2515250	2.5"	65	1.5"	40	250	2	100	500	180	225	65	125	95	320	250	110	14	6	370	M12	M12	32	35	10	80	71
EHF32250	3"	80	2"	50	250	2	125	500	180	225	65	125	95	320	250	110	15	6	370	M12	M12	32	35	10	80	76
EHF425250	4"	100	2.5"	65	250	2	125	500	200	250	80	160	120	360	280	110	16	6	370	M16	M12	32	35	10	80	84
EHF53250	5"	125	3"	80	250	2	125	500	225	280	80	160	120	400	315	110	18	6	370	M16	M12	32	35	10	80	88
EHF53315	5"	125	3"	80	315	3	125	530	250	315	80	160	120	400	315	110	20	8	370	M16	M12	42	45	12	110	130
EHF54315	5"	125	4"	100	315	3	140	530	250	315	80	160	120	400	315	110	19	8	370	M16	M12	42	45	12	110	138

Flange standard : ASTM B16.42-1998 Class150					Flange standard : ASTM B16.42-1998 Class300				
DN1/DN2	1.5"	2"	2.5"	3"	4"	5"	3"	4"	5"
D1/D2	127	152.4	177.8	190.5	228.6	254	209.6	254	279.4
K1/K2	98.6	120.7	139.7	152.4	190.5	215.9	168.1	200.2	234.9
n-d1/ n-d2	4-φ15.7	4-φ19.1	4-φ19.1	4-φ19.1	8-φ19.1	8-φ22.4	8-φ22.4	8-φ22.4	8-φ22.4

Description & Features

ESF series are designed in accordance with all requirements of UL standard for safety (UL448). ESF pumps are of high flow rate, high efficiency, stable operation, low noise and long service life, easy to install and maintain.

Model Instruction



For instance, discharge diameter 150mm, nominal Impeller Diameter 360mm, its name ESF150-360.

Material Code

- Q: Ductile Iron Casing
- C250: Cast Iron Casing
- B85: Bronze Impeller
- 40Cr: 40CR Shaft
- P: Gland Packing
- A: ANSI Flange

Product standard

Performance is meeting with UL448-2013 regulation.

Flange standard

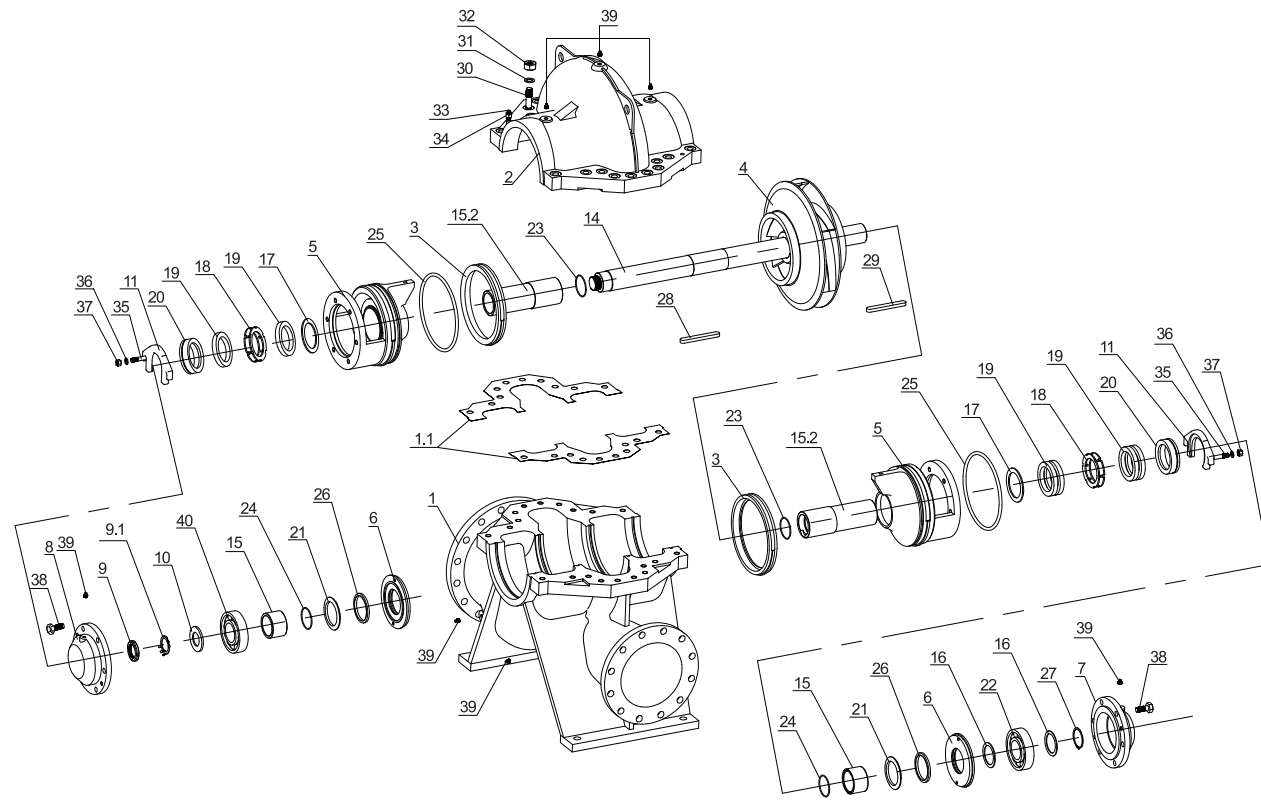
ASME B16.42-1998 CLASS300, ASME B16.42-1998 CLASS250

Operating Data

Suction Diameter	150~200 mm
Discharge Diameter	100~150 mm
Flowrate(Q)	450~2000 usgpm
Head(H)	82~304 psi
Speed	2900 rpm
Working Pressure	230 ~ 400 psi

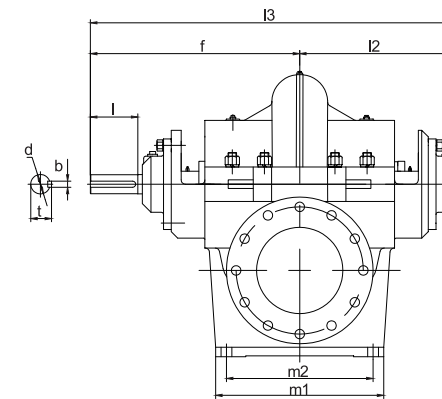
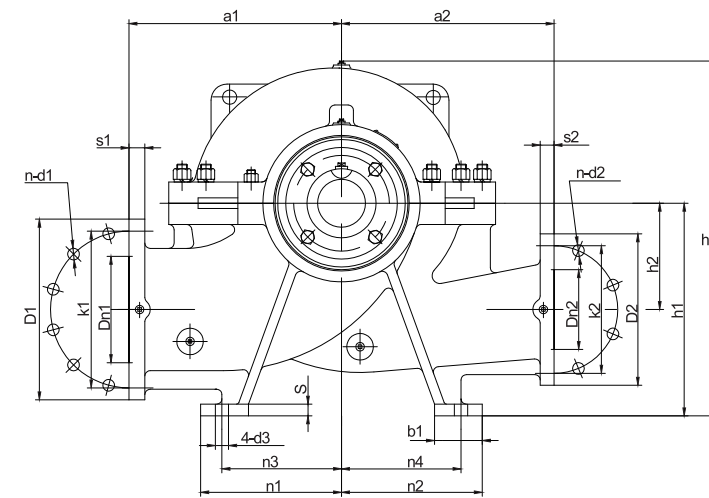


ESF Series Explode View & List of Parts



Code	Part Name	Code	Part Name	Code	Part Name
01	Casing-Bottom	15	Shaft Sleeve-Short	28	Key
01.1	Casing Gasket	15.2	Packing Shaft Sleeve	29	Key
02	Casing-Top	16	Bearing Seal Plate	30	Screw Bolt
03	Wear Ring	17	Packing Seal Plate	31	Spring Washer
04	Impeller	18	Lantern Ring	32	Screw Nut
05	Seal Housing	19	Gland	33	Pin
06	Bearing Cover	20	Packing Cover	34	Screw Nut
07	Bearing Housing-Driver End	21	Slinger	35	Screw Bolt
08	Bearing Housing-Non-Driver End	22	Bearing	36	Flat Gasket
09	Screw Nut	23	O-ring	37	Screw Nut
09.1	Lock Washer for Nut	24	O-ring	38	Screw Bolt
10	Bearing Slinger	25	O-ring	39	Plug
11	Seal Plate	26	Felting	40	Bearing
14	Shaft	27	External Circlips		

ESF Series Installation Dimensions



ASME 16.42-1998 CLASS300, ASME 16.42-1998 CLASS250					
DN	80	100	125	150	200
D	209.6	254	279.4	317.5	381
K	168.1	200.2	235	269.7	330.2
n	8	8	8	12	12
d	22.4	22.4	22.4	22.4	25.4

Model	DN1	DN2	a1	a2	f	l2	l3	h	h1	h2	m1	m2	n1	n2	n3	n4	b1	d3	s	d	b	l	t	Weight (kg)	
ESF100-250						300	685	570																230	
ESF100-310	150	100	342	339	385	320	705	605	355	170	320	270	235	235	200	200	80			φ34	10	80	37.3	283	
ESF100-375								620									75				φ39			42.3	270
ESF125-290		125	382	380		365	850	635										φ25	22					322	
ESF125-365								665		200											φ44	12		47.3	342
ESF150-290	200				485	390	875	660	400	210	390	340	265	265	225	225	90					110		355	
ESF150-360		150	412	412				670		200											φ49	14		52.8	385



EHF
series

Horizontal End-Suction Fire Pump

Horizontal Split-case Fire Pump

ESF
series

CERTIFICATE OF COMPLIANCE

Certificate Number 20170207-EX27253
Report Reference EX27253-20170205
Issue Date 2017-FEBRUARY-07

Issued to: EIFEL PUMP (FUZHOU) CORP LTD
No 3 West 8Th Rd, Phase 1St
Tieling Ind Zone, Minhou
Fuzhou
Fujian 350101 CHINA

This is to certify that
representative samples of CENTRIFUGAL FIRE PUMPS, END SUCTION
SEE NEXT PAGE

Have been investigated by UL in accordance with the
Standard(s) indicated on this Certificate.

Standard(s) for Safety: UL 448-Standard for Pumps for Fire-Protection Service
Additional Information: See the UL Online Certifications Directory at
www.ul.com/database for additional information

Only those products bearing the UL Certification Mark should be considered as being covered by UL's
Certification and Follow-Up Service.

Look for the UL Certification Mark on the product.

B. Mahlenz

Bruce Mahrenholz, Director North American Certification Program
UL LLC

Any information and documentation involving UL Mark services are provided on behalf of UL LLC (UL) or any authorized licensee
contact a local UL Customer Service Representative at <http://ul.com/about/locations/>

of UL. For questions, please



CERTIFICATE OF COMPLIANCE

Certificate Number 20170213-EX27254
Report Reference EX27254-20170210
Issue Date 2017-FEBRUARY-13

Issued to: EIFEL PUMP (FUZHOU) CORP LTD
No 3 West 8Th Rd, Phase 1St
Tieling Ind Zone, Minhou
Fuzhou
Fujian 350101 CHINA

This is to certify that
representative samples of CENTRIFUGAL FIRE PUMPS, SPLIT CASE
See addendum page

Have been investigated by UL in accordance with the
Standard(s) indicated on this Certificate.

Standard(s) for Safety: UL 448 Standard for Pumps for Fire-Protection Service
Additional Information: See the UL Online Certifications Directory at
www.ul.com/database for additional information

Only those products bearing the UL Certification Mark should be considered as being covered by UL's
Certification and Follow-Up Service.

Look for the UL Certification Mark on the product.

B. Mahlenz

Bruce Mahrenholz, Director North American Certification Program
UL LLC

Any information and documentation involving UL Mark services are provided on behalf of UL LLC (UL) or any authorized licensee
contact a local UL Customer Service Representative at <http://ul.com/about/locations/>

of UL. For questions, please

